



MONTHLY MEMBERSHIP PROGRESS REPORT

District 3 L

Results as of: 3/31/2016

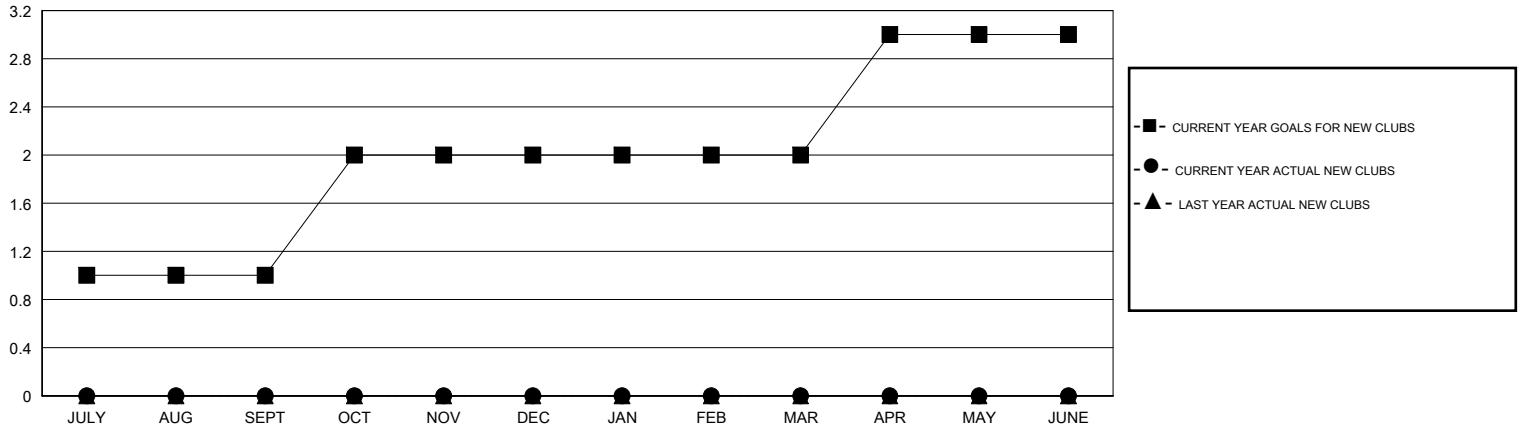
GMT: HAL GRIFFIN

LOCATION OKLAHOMA

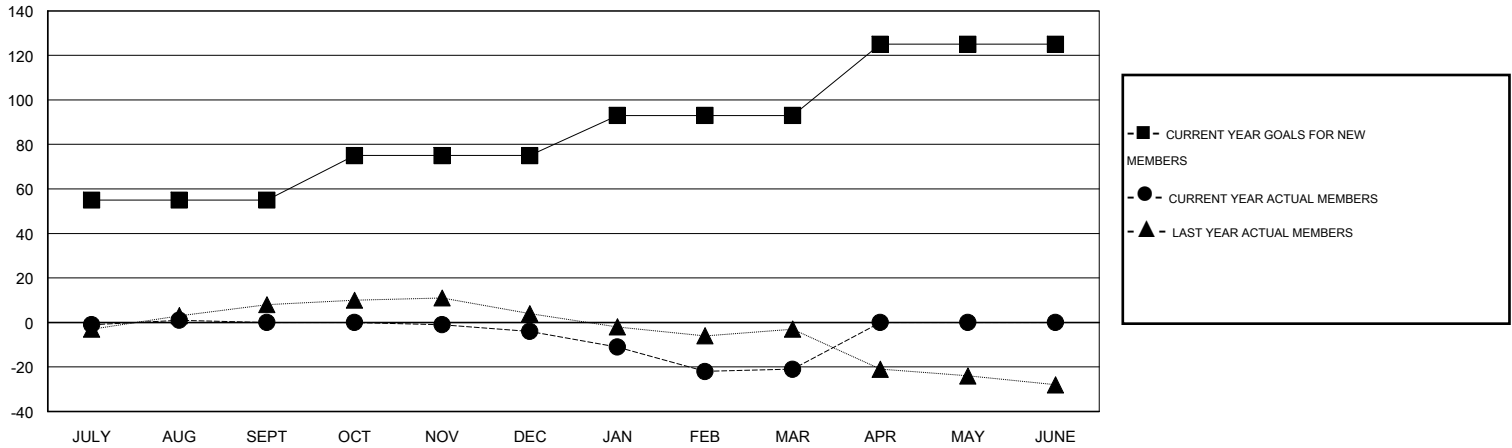
GMT CA 1

Clubs					Members				
RESULTS FOR 2015-2016					RESULTS FOR 2015-2016				
QUARTER	NEW CLUB GOAL	NEW CLUBS	DROPPED CLUBS	NET GAIN/LOSS	QUARTER	NEW MEMBER GOAL	CHARTER AND NEW MEMBERS ADDED	DROPPED MEMBERS	NET GAIN/LOSS
JULY/AUG/SEPT	1	0	0	0	JULY/AUG/SEPT	55	14	14	0
OCT/NOV/DEC	1	0	0	0	OCT/NOV/DEC	20	9	13	-4
JAN/FEB/MAR	0	0	0	0	JAN/FEB/MAR	18	14	31	-17
APR/MAY/JUNE	1	0	0	0	APR/MAY/JUNE	32	0	0	0

GOALS AND ACTUAL NEW CLUBS CUMULATIVE



GOALS AND ACTUAL MEMBERS CUMULATIVE



DROPPED CLUBS: 0	20 CLUBS OF 36 ADDED 1 OR MORE NEW MEMBERS	<u>GENDER DISTRIBUTION</u>	
<u>DROPPED MEMBERS</u>		MALE	505 (67.24%)
DECEASED	4	FEMALE	246 (32.76%)
CLUB CANCELLED	0	FAMILY UNIT MEMBERS 115 HEAD OF HOUSEHOLD 57 NON-HEAD OF HOUSEHOLD 58	
OTHER	54		
TOTAL	58		

[CLICK HERE FOR HEALTH ASSESSMENT DATA](#)